



SCREW AIR COMPRESSOR

Add:Wenling Industrial Zone,Wenling,Zhejiang,China
Tel: 86-576-86425268
Fax: 89-576-86425199
www.xinlei.com

Equipment models or technical parameters provided in this catalogue are subject to the tests of actual samples and may be changed without notice. Please contact the sales to obtain more product information and service data.
Xinlei holds the final explanation right for this catalogue.



ABOUT US

Xinlei compressor co., ltd. was founded in Zhejiang, China in 1996. Xinlei is a world class manufacturer of air compressors specializing in the research and development, sales and services of air compressors. The company covers an area of 120,000 square meters and has more than 1,200 employees, which includes 140 professional technical personnel. Xinlei's factory has imported high precision processing equipment from Japan, Europe and the USA combined with advanced robots, modern production line, and ERP management platform to ensure the highest efficiency and quality production. Xinlei fully complies with ISO9001:2015 quality management

system and ISO14001:2015 environmental protection system. Other international certifications obtained include the EU CE, German TUV, ETL, ASME, etc. The annual output of air compressors by Xinlei is 1.5 million units covering more than 1,000 different specifications of air compressor including small reciprocating type, oil-injected screw type, oil-free screw type, new electric vehicle oil-less series. Xinlei is the leader in manufacturing of permanent magnet variable speed and two stage compression permanent magnet variable speed air compressor in the market. Xinlei air compressors are exported to

more than 100 different countries around the world.

Xinlei's investment in research and development of air compressors over the years has proven to be successful by obtaining 30 invention patents, 48 utility model patents, 12 appearance design patents. Xinlei will continue to stick to the motto of "innovation reflects values" to achieve mutual benefits with global partners, suppliers, and employees.

VISION,MISSION,PRINCIPLE,CORE VALUES

VISION	TO BE A LEADER OF INNOVATION IN THE FIELD OF COMPRESSED AIR, TOWARDS GREEN ENERGY
MISSION	INNOVATION REFLECTS VALUES
PRINCIPLE	THE WORLD-CLASS MANUFACTURER OF AIR COMPRESSORS
CORE VALUES	NEVER STOP THINKING NEVER STOP PRACTICING RESPONSIBILITY LEADS TO QUALITY REPUTATION LEADS TO BRANDING

QUALITY CONTROL

Xinlei practices strict quality control procedures throughout the entire production process from procuring of raw materials, processing of components, assembly of machine, to testing of machine performance.



A	B	C
	D	E

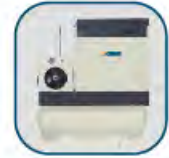
- A. LEITZ three-coordinate measuring instrument
- B. MAZAK CNC machining center
- C. Industrial robot
- D. High precision processing machine tool
- E. Production assembly line

OUR PRODUCTS



SUPER ENERGY SAVING EPM SERIES

P07-P10



ALL IN ONE SERIES

P11-P12



PERMANENT MAGNET VARIABLE SPEED PM SERIES

P13-P14



TWO STAGE COMPRESSION PERMANENT MAGNET VARIABLE SPEED NORMAL PRESSURE SERIES

P15-P16



TWO STAGE COMPRESSION PERMANENT MAGNET VARIABLE SPEED LOW PRESSURE SERIES

P17-P20



FIXED SPEED AM SERIES

P21-P22



ENVIRONMENTAL PROTECTION REFRIGERATED AIR DRYER

P23-P24



AIR TANK

P25-P26



PRECISION FILTER

P27-P28

CERTIFICATIONS



SUPER ENERGY SAVING EPM SERIES

TECHNICAL SPECIFICATION

MODEL	POWER		PRESSURE	CAPACITY	DIMENSIONS	WEIGHT	OUTLET PIPE	NOISE LEVEL
	kW	HP						
SE-7.5EPM	5.5	7.5	7	0.72	950 X 700 X 945	195	G3/4	65
			8	0.66				
			10	0.60				
SE-10EPM	7.5	10	7	1.16	950 X 700 X 945	195	G3/4	65
			8	1.11				
			10	1.00				
SE-15EPM	11	15	7	1.87	1000 X 820 X 1105	285	G3/4	65
			8	1.78				
			10	1.62				
SE-20EPM	15	20	7	2.60	1000 X 820 X 1105	285	G3/4	65
			8	2.48				
			10	2.25				
SE-30EPM	22	30	7	3.92	1100 X 820 X 1170	370	G1 1/4	72
			8	3.73				
			10	3.40				
SE-40EPM	30	40	7	5.29	1200 X 950 X 1360	550	G1 1/4	75
			8	5.04				
			10	4.51				
SE-50EPM	37	50	7	6.82	1300 X 1000 X 1345	575	G1 1/2	75
			8	6.48				
			10	5.90				
SE-60EPM	45	60	7	8.21	1300 X 1000 X 1345	575	G1 1/2	80
			8	7.82				
			10	7.10				
SE-75EPM	55	75	7	10.36	1600 X 1300 X 1650	1245	G2	80
			8	9.87				
			10	8.97				
SE-100EPM	75	100	7	13.27	1600 X 1300 X 1650	1245	G2	80
			8	12.64				
			10	11.49				

•The exhaust volume is measured under the rated exhaust pressure, according to the national standard GB3853 test (equivalent to ISO1217 appendix C).

•Recommend frequency 30%-100%.

•The above data is based on the standard grid- 380V / 50HZ.

•Please make further inquiry for the non-standard specification type and machines which are used under high/low temperature,high humidity,dusty working environment.

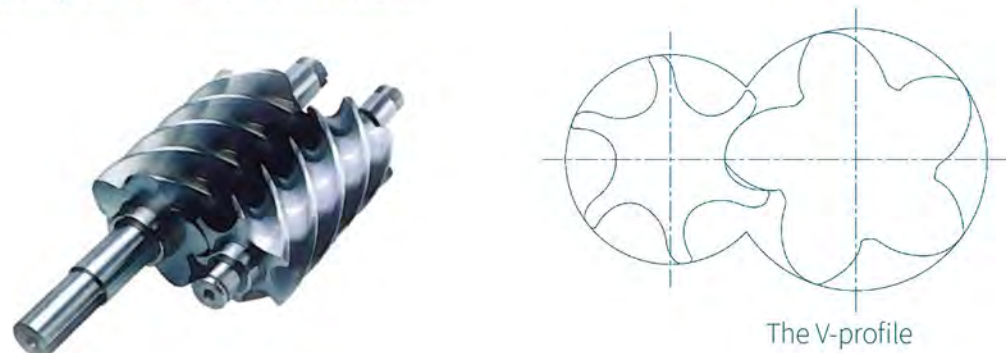
SUPER ENERGY SAVING

- ▶ ADVANCED V-PROFILE
- ▶ TAPER CONNECTION
- ▶ ENERGY SAVING
- ▶ HEAT RESISTANCE UP TO 180°C



XINLEI SUPER ENERGY SAVING COMPRESSOR

After intensive R&D, Xinlei has successfully developed an advanced V-profile air end. This design has been proven to be one of the highest efficiency profiles with its high volume efficiency, ideal driving contact points, and small leakage area of the air exhaust side. This single stage compression's performance has been tested to meet and even exceed China's first class energy efficiency standard for air compressors.



PRODUCT FEATURES

1 SUPER ENERGY SAVING

Exceeds the energy saving of GB/T19153-2009 first class energy efficiency standard.

2 ZERO LOSS TRANSMISSION

The EPM series air compressor adopts the design of having a single shaft between the air end and the motor. With the omission of intermediate transmission such as center bracket and coupling, belt pulley, gear and other connecting parts, there is zero loss in transmission.

3 AIR COOLED HIGH PROTECTION RATING PERMANENT MAGNET MOTOR

The main motor of the super energy permanent magnet single-stage screw compressor adopts air-cooled IP55 protection grade, fully enclosed structure, anti-dust and anti-shooting water, and the safety grade is high, with a large centrifugal blade, the temperature rise is below 60K, without additional power, the motor has a unique thermal protection function to prevent the demagnetization.



4 NO DEMAGNETIZATION

The EPM Series air compressor's permanent magnet motor is made of UH grade Nd-Fe-B magnetic material. This magnetic material has high heat resistance up to 180C and is able to retain its magnetism permanently.



5 HIGH EFFICIENCY PERMANENT MAGNET SYNCHRONOUS MOTOR

The EPM Series air compressor's permanent magnet synchronous motor has no slip, no electrical excitation and low heat loss. The motor has a 5 ~ 12% higher efficiency compared to asynchronous motor of the same capacity and maintains high efficiency even when running at low speed.



6 SILENT

The EPM Series air compressor is designed to safe and stable operation, with low noise level. The noise level is approximately 68 – 74 dB under full load condition.



7 INTELLIGENT CONTROL AND OPERATION

The main controller of the EPM Series air compressor utilizes a 7" colour touch screen, equipped with active protection, warning alarm, maintenance reminders, and can run automatically based on a pre-programmed schedule.



8 HIGH QUALITY INVERTER

The EPM Series air compressor utilizes high quality inverter to ensure stable operation.

Xinlei company solemnly promises to the market that we only provide real actual data, whether for samples or nameplates. We only produce the real first class energy efficiency standard air compressors.

ALL IN ONE SERIES

- AIR COMPRESSOR
- REFRIGERATED AIR DRYER
- AIR TANK
- COMPACT
- ENVIRONMENTALLY FRIENDLY



ALL IN ONE FIXED SPEED SERIES

TECHNICAL SPECIFICATION

MODEL	POWER kW HP		PRESSURE Bar	CAPACITY m ³ /min	DIMENSIONS (L×W×H)mm	WEIGHT Kg	OUTLET PIPE DIAMETER	NOISE LEVEL dB	TANK VOLUME L
WITH AIR TANK									
XLAMT7.5A	5.5	7.5	7	0.65	1230X600X1530	300	G3/4	65	300
			8	0.60					
			10	0.55					
XLAMT10A	7.5	10	7	1.05	1230X600X1530	300	G3/4	65	300
			8	0.99					
			10	0.90					
XLAMT15A	11	15	7	1.68	1550X820X1780	350	G3/4	65	300
			8	1.59					
			10	1.45					
XLAMT20A	15	20	7	2.20	1550X820X1780	350	G3/4	65	300
			8	2.10					
			10	1.91					
WITH AIR TANK AND DRYER									
XLAMTD7.5A	5.5	7.5	7	0.65	1725X660X1625	380	G3/4	65	200/500
			8	0.60					
			10	0.55					
XLAMTD10A	7.5	10	7	1.05	1725X660X1625	380	G3/4	65	200/500
			8	0.99					
			10	0.90					
XLAMTD15A	11	15	7	1.68	1880X820X1940	505	G3/4	65	500
			8	1.59					
			10	1.45					
XLAMTD20A	15	20	7	2.20	1880X820X1940	505	G3/4	65	500
			8	2.10					
			10	1.91					
XLAMTD30A	22	30	7	3.52	2100X750X1950	650	G1	75	600
			8	3.36					
			10	3.06					

- The exhaust volume is measured under the rated exhaust pressure, according to the national standard GB3853 test (equivalent to ISO1217 appendix C).
- The above data is based on the standard grid- 380V / 50HZ.
- Please make further inquiry for the non-standardspecification type and machines which are used under high/low temperature,high humidity,dusty working environment.

ALL IN ONE SOLUTION

Xinlei ALL IN ONE series compressed air system integrates screw air compressor, refrigerated air dryer, and air receiver tank into one assembly. This compact assembly provides a complete solution to produce clean and dry compressed air. Simplicity in just connecting an outlet pipe, drain pipe, and electrical cables to the system saves cost and space.

HIGH QUALITY COMPONENTS



Reliable refrigerant compressor



Oversized durable heat exchanger

ALL IN ONE PERMANENT MAGNET VARIABLE SPEED SERIES

TECHNICAL SPECIFICATION

MODEL	POWER kW HP		PRESSURE Bar	CAPACITY m³/min	DIMENSIONS (L×W×H)mm	WEIGHT Kg	OUTLET PIPE DIAMETER	NOISE LEVEL dB	TANK VOLUME L
WITH AIR TANK									
XLPMT7.5A	5.5	7.5	7	0.65	1230X600X1530	300	G3/4	65	300
			8	0.60					
			10	0.55					
			13	0.45					
XLPMT10A	7.5	10	7	1.05	1230X600X1530	300	G3/4	65	300
			8	0.99					
			10	0.90					
			13	0.75					
XLPMT15A	11	15	7	1.68	1550X820X1780	350	G3/4	65	300
			8	1.59					
			10	1.45					
			13	1.30					
XLPMT20A	15	20	7	2.20	1550X820X1780	350	G3/4	65	300
			8	2.10					
			10	1.91					
			13	1.74					
			15	1.50					
WITH AIR TANK AND DRYER									
XLPMTD7.5A	5.5	7.5	7	0.65	1725X660X1625	380	G3/4	65	200/500
			8	0.60					
			10	0.55					
			13	0.45					
XLPMTD10A	7.5	10	7	1.05	1725X660X1625	380	G3/4	65	200/500
			8	0.99					
			10	0.90					
			13	0.75					
XLPMTD15A	11	15	7	1.68	1880X820X1940	505	G3/4	65	500
			8	1.59					
			10	1.45					
			13	1.30					
XLPMTD20A	15	20	7	2.20	1880X820X1940	505	G3/4	65	500
			8	2.10					
			10	1.91					
			13	1.74					
			15	1.40					
XLPMTD30A	22	30	7	3.52	2100X750X1950	650	G1	75	600
			8	3.36					
			10	3.06					
			13	2.80					
			15	2.20					

- The exhaust volume is measured under the rated exhaust pressure, according to the national standard GB3853 test (equivalent to ISO1217 appendix C).
- Recommend frequency 30%~100%
- The above data is based on the standard grid- 380V / 50HZ
- Please make further inquiry for the non-standard specification type and machines which are used under high/low temperature,high humidity,dusty working environment.
- 15bar is special for laser cutting machine.

PERMANENT MAGNET VARIABLE SPEED SERIES



- HIGH EFFICIENCY IE4 MOTOR
- TAPERED CONNECTION
- HIGH HEAT RESISTANCE UP TO 180°C
- NO DEMAGNETIZATION

SILENT

Xinlei's permanent magnet variable speed series air compressor is designed to operate with low noise level. A majority of variable speed air compressor is utilized to run below its rated full speed and therefore reduces the noise level even further by running at lower speeds. Lower noise level also relates to lower mechanical wear and tear and therefore extends the lifetime of the equipment.

SOFT START DESIGN

The soft start of the air compressor significantly reduces the impact on both electrical and mechanical components as compared to a full voltage start or star delta start designs. Inverter control ensures smooth acceleration and deceleration of the compressor which translates to smooth driving voltage and current characteristic curve.

SYNCRHONOUS DESIGN

Permanent magnet synchronous motor has no slip, no electrical excitation and low heat loss. The motor has a 5 ~ 12% higher efficiency compared to asynchronous motor of the same capacity and maintains high efficiency even when running at low speed.

TECHNICAL SPECIFICATION

MODEL	POWER kW	HP	PRESSURE Bar	CAPACITY m ³ /min	DIMENSIONS (L×W×H)mm	WEIGHT Kg	OUTLET PIPE DIAMETER	NOISE LEVEL dB
XLPM7.5A	5.5	7.5	7	0.65	840 X 670 X 925	200	G3/4	65
			8	0.60				
			10	0.55				
			13	0.45				
XLPM10A	7.5	10	7	1.05	840 X 670 X 925	200	G3/4	65
			8	0.99				
			10	0.90				
			13	0.75				
XLPM15A	11	15	7	1.68	1000 X 820 X 1145	300	G3/4	65
			8	1.59				
			10	1.45				
			13	1.30				
XLPM20A	15	20	7	2.20	1000 X 820 X 1145	300	G3/4	65
			8	2.10				
			10	1.91				
			13	1.74				
			15	1.40				

MODEL	POWER kW	HP	PRESSURE Bar	CAPACITY m ³ /min	DIMENSIONS (L×W×H)mm	WEIGHT Kg	OUTLET PIPE DIAMETER	NOISE LEVEL dB
XLPM25A	18.5	25	7	2.80	1100 X 880 X 1190	390	G1 1/4	75
			8	2.66				
			10	2.41				
			13	2.20				
XLPM30A	22	30	7	3.52	1100 X 880 X 1190	390	G1 1/4	75
			8	3.36				
			10	3.06				
			13	2.80				
			15	2.20				
XLPM40A	30	40	7	4.95	1200 X 950 X 1358	530	G1 1/4	75
			8	4.72				
			10	4.30				
			13	3.90				
XLPM50A	37	50	7	6.51	1300 X 1000 X 1366	590	G1 1/2	75
			8	6.19				
			10	5.62				
			13	5.10				
XLPM60A	45	60	7	7.71	1300 X 1000 X 1366	590	G1 1/2	80
			8	7.35				
			10	6.67				
			13	5.80				
XLPM75A	55	75	7	10.14	1600 X 1300 X 1600	1210	G2	80
			8	9.66				
			10	8.77				
			13	7.95				
XLPM100A	75	100	7	12.78	1600 X 1300 X 1600	1210	G2	80
			8	12.18				
			10	11.07				
			13	9.78				
XLPM120A	90	120	7	14.91	1600 X 1300 X 1600	1220	G2	85
			8	14.17				
			10	12.88				
			13	11.50				
XLPM150A	110	150	7	18.96	2090 X 1550 X 2000	2300	DN65	85
			8	18.06				
			10	16.42				
			13	14.50				
XLPM175A	132	175	7	23.37	2090 X 1550 X 2000	2300	DN65	85
			8	22.26				
			10	20.03				
			13	17.80				

•The exhaust volume is measured under the rated exhaust pressure, according to the national standard GB3853 test (equivalent to ISO1217 appendix C).

•Recommend frequency 30%-100%.

•The above data is based on the standard grid- 380V / 50HZ.

•Please make further inquiry for the non-standard specification type and machines which are used under high/low temperature,high humidity,dusty working environment.

TWO STAGE COMPRESSION PERMANENT MAGNET VARIABLE SPEED
NORMAL PRESSURE SERIES

- SMOOTH SPEED ADJUSTMENT
- EXCEEDS FIRST CLASS ENERGY EFFICIENCY STANDARDS
- LOW NOISE
- HIGH DISCHARGE CAPACITY
- DUAL INVERTER CONTROL



TECHNICAL SPECIFICATION

MODEL	POWER kW HP		PRESSURE Bar	CAPACITY m³/min	DIMENSIONS (L×W×H)mm	WEIGHT Kg	OUTLET PIPE DIAMETER	NOISE LEVEL dB
XLPM30A-IID	22	30	7	4.20	1300 X 950 X 1340	590	G1 1/4	75
			8	4.00				
			10	3.60				
XLPM40A-IID	30	40	7	5.75	1350 X 1000 X 1350	670	G1 1/2	75
			8	5.48				
			10	4.90				
XLPM50A-IID	37	50	7	7.50	1350 X 1000 X 1350	670	G1 1/2	75
			8	7.10				
			10	6.45				
XLPM60A-IID	45	60	7	9.26	1760 X 1300X 1750	1360	G2	78
			8	8.80				
			10	7.92				
XLPM75A-IID	55	75	7	11.46	1760 X 1300 X 1750	1360	G2	80
			8	10.92				
			10	9.82				

MODEL	POWER kW HP		PRESSURE Bar	CAPACITY m³/min	DIMENSIONS (L×W×H)mm	WEIGHT Kg	OUTLET PIPE DIAMETER	NOISE LEVEL dB
XLPM100A-IID	75	100	7	15.60	2670 X 1880 X 1820	2600	DN65	80
			8	14.92				
			10	13.23				
XLPM120A-IID	90	120	7	18.75	2670 X1880 X 1820	2600	DN65	85
			8	17.85				
			10	16.45				
XLPM150A-IID	110	150	7	23.76	2740 X 2145 X 2000	3550	DN65	85
			8	22.57				
			10	20.58				
XLPM175A-IID	132	175	7	27.55	2740 X 2145 X 2000	3550	DN65	85
			8	26.25				
			10	23.85				
XLPM200A-IID	160	200	7	33.28	3980 X 2380X 2260	5300	DN100	85
			8	32.23				
			10	28.56				
XLPM250A-IID	185	250	7	40.32	3980X 2380 X 2260	6000	DN100	85
			8	37.38				
			10	33.28				
XLPM270A-IID	200	270	7	43.55	3980 X 2380 X 2260	6000	DN100	85
			8	41.85				
			10	37.46				
XLPM300A-IID	220	300	7	47.38	3980 X 2380X 2260	6000	DN100	85
			8	45.50				
			10	41.26				
XLPM350A-IID	250	350	7	52.20	3980 X 2380 X 2260	6000	DN100	85
			8	50.85				
			10	44.90				
XLPM420A-IID	315	420	7	63.80	3980 X 2380 X 2500	6200	DN125	90
			8	61.50				
			10	56.00				

•The exhaust volume is measured under the rated exhaust pressure, according to the national standard GB3853 test (equivalent to ISO1217 appendix C).
•Recommend frequency 30%~100%.
•The above data is based on the standard grid- 380V / 50HZ.
•Please make further inquiry for the non-standard specification type and machines which are used under high/low temperature,high humidity,dusty working environment.

TWO STAGE COMPRESSION PERMANENT MAGNET VARIABLE SPEED
LOW PRESSURE SERIES

- SMOOTH SPEED ADJUSTMENT
- EXCEEDS FIRST CLASS ENERGY EFFICIENCY STANDARDS
- LOW NOISE
- HIGH DISCHARGE CAPACITY
- DUAL INVERTER CONTROL



TECHNICAL SPECIFICATION

MODEL	POWER kW HP		PRESSURE Bar	CAPACITY m³/min	DIMENSIONS (L×W×H)mm	WEIGHT Kg	OUTLET PIPE DIAMETER	NOISE LEVEL dB
XLPM50A-IID	37	50	4	9.39	1650 X 1300 X 1850	1360	G2	75
			5	8.79				
XLPM60A-IID	45	60	4	11.32	1650 X 1300 X 1850	1360	G2	80
			5	10.61				
XLPM75A-IID	55	75	4	14.95	2670 X 1880 X 2000	2800	DN65	80
			5	13.91				
XLPM100A-IID	75	100	4	19.01	2670 X 1880 X 2000	2800	DN65	80
			5	18.60				
XLPM120A-IID	90	120	4	23.92	3335 X 2145 X 2055	3600	DN100	80
			5	22.78				
XLPM150A-IID	110	150	4	28.33	3335 X 2145 X 2055	3600	DN100	80
			5	26.98				
XLPM175A-IID	132	175	4	33.10	3335 X 2145 X 2055	3600	DN100	82
			5	31.14				

MODEL	POWER kW HP		PRESSURE Bar	CAPACITY m³/min	DIMENSIONS (L×W×H)mm	WEIGHT Kg	OUTLET PIPE DIAMETER	NOISE LEVEL dB
XLPM200A-IID	160	200	4	44.67	3978 X 2378 X 2450	6200	DN125	82
			5	41.70				
XLPM250A-IID	185	250	4	47.39	3978 X 2378 X 2450	6200	DN125	85
			5	45.00				
XLPM270A-IID	200	270	4	50.83	3978 X 2378 X 2450	6200	DN125	85
			5	46.20				
XLPM300A-IID	220	300	4	54.00	3978 X 2378 X 2450	6200	DN125	85
			5	51.45				

•The exhaust volume is measured under the rated exhaust pressure, according to the national standard GB3853 test (equivalent to ISO1217 appendix C).
•Recommend frequency 30%~100%.
•The above data is based on the standard grid- 380V / 50HZ.
•Please make further inquiry for the non-standard specification type and machines which are used under high/low temperature,high humidity,dusty working environment.

PERMANENT MAGNET VARIABLE SPEED LOW PRESSURE
SCREW AIR COMPRESSOR SERIES

TECHNICAL SPECIFICATION

MODEL	POWER kW HP		PRESSURE Bar	CAPACITY m³/min	DIMENSIONS (L×W×H)mm	WEIGHT Kg	OUTLET PIPE DIAMETER	NOISE LEVEL dB
XLPM60AL	45	60	2	15.00	2560 X 1710 X 1950	2500	DN80	80
			3	13.00				
XLPM75AL	55	75	2	18.50	2560 X 1710 X 1950	2500	DN80	80
			3	17.50				
XLPM100AL	75	100	2	25.50	2860 X 1800 X 2080	2800	DN100	80
			3	22.00				
XLPM120AL	90	120	2	30.00	2860 X 1800 X 2080	2800	DN100	85
			3	27.00				
XLPM150AL	110	150	2	38.50	3515 X 2230 X 2450	3300	DN150	85
			3	31.50				
XLPM175AL	132	175	2	43.50	3515 X 2230 X 2450	3500	DN150	85
			3	37.50				
XLPM200AL	160	200	2	50.50	3515 X 2230 X 2450	3600	DN150	85
			3	45.50				

•The exhaust volume is measured under the rated exhaust pressure, according to the national standard GB3853 test (equivalent to ISO1217 appendix C).
•Recommend frequency 30%~100%.
•The above data is based on the standard grid- 380V / 50HZ.
•Please make further inquiry for the non-standard specification type and machines which are used under high/low temperature,high humidity,dusty working environment.

INNOVATIVE TWO STAGE COMPRESSION PERMANENT MAGNET VARIABLE SPEED TECHNOLOGY

THE INDUSTRY PIONEER

Xinlei is the pioneer in developing the two stage compression permanent magnet variable speed air compressor. This new innovation is able to save up to more than 50% energy. A complete range of air compressor from 7.5 – 315 kW is available to meet the market demand benefiting the industry in energy savings

HIGH EFFICIENCY AIR END ASSEMBLY

SYNCHRONOUS MOTOR, SMOOTH SPEED ADJUSTMENT

Xinlei is the only one in the world who incorporates electronic speed control in two stage compression, achieving smooth speed adjustment for both first and second stage compression simultaneously.



TWIN PERMANENT MAGNET SYNCHRONOUS MOTOR DIRECTLY CONNECTED TO DOUBLE AIR END WITH A SINGLE SHAFT RESPECTIVELY

Xinlei is the world pioneer in incorporating permanent magnet synchronous motor in two stage compression screw air compressor, both first and second stage air end utilizing single shaft connection design, achieving zero loss in transmission.



HIGH PRECISION DESIGN

Every screw air end element is precisely design and tested to ensure the highest quality and efficiency. Asymmetric rotor type profile increases the efficiency by 3 – 5%. Lower compression ratio for each of the air end assembly extends the life of the bearings and air end.

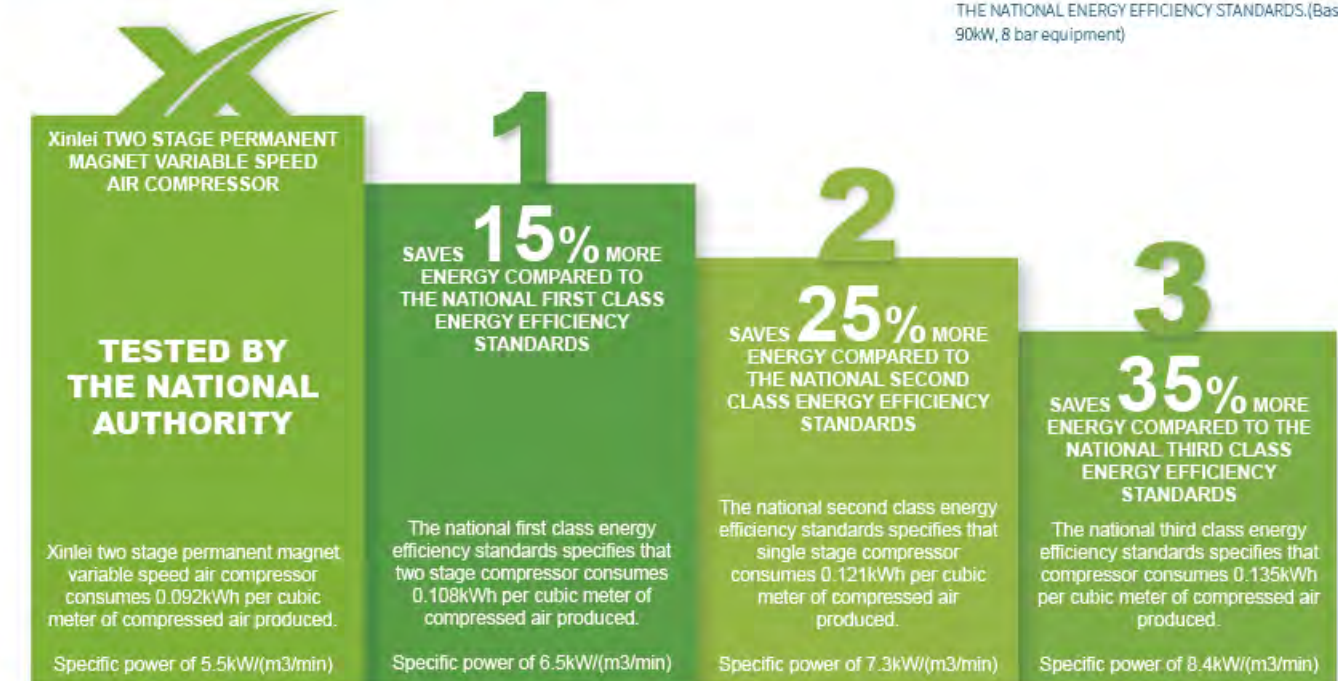


ENVIRONMENTALLY FRIENDLY

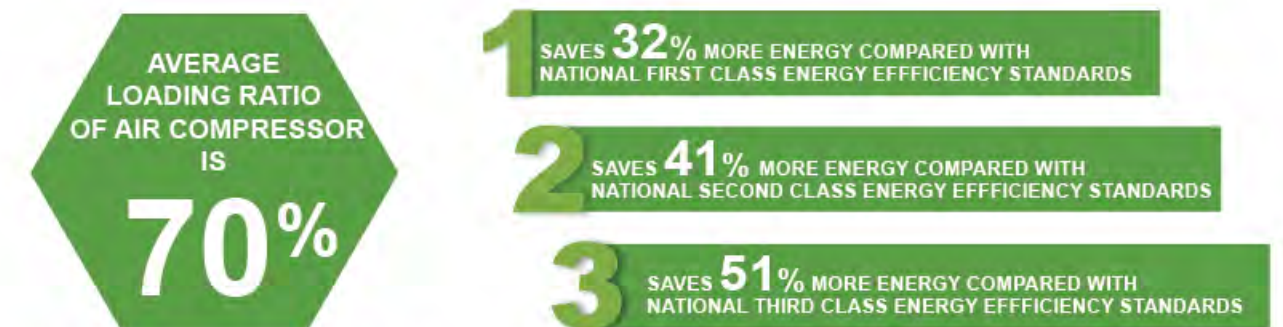
High energy saving air compressor technology developed by Xinlei independently, exceeds the national first class energy efficiency standards, leading the world in the field of saving the environment.

ENERGY SAVINGS ON FULL LOAD

COMPARISON OF THE ENERGY CONSUMPTION BASED ON THE NATIONAL ENERGY EFFICIENCY STANDARDS.(Based on 90kW, 8 bar equipment)



According to the test results issued by the national authority, Xinlei air compressor is able to save more than 15% of energy compared to the national first class energy efficiency standards, more than 25% of energy compared to the national second class energy efficiency standards, more than 35% of energy compared to the national third class energy efficiency standards.



Xinlei air compressor can automatically realize frequency conversion work. energy can be saved by approximately 32% compared with ordinary level 1 efficiency under the condition that average compressed air load ratio is 70%.energy can be saved by approximately 41% compared with ordinary level 2 efficiency, and energy can be saved by approximately 51% compared with ordinary level 3 efficiency.

SILENT

The rotation speed of the first stage and second stage compression is lower than 2200rpm which translate to lower noise level.

FIXED SPEED AM SERIES



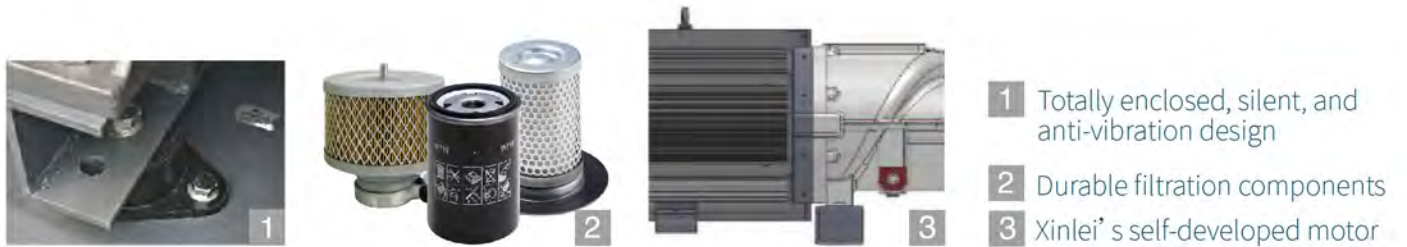
USER FRIENDLY DESIGN

Silent and low vibration, user friendly design, optimized structure, low maintenance cost.

PRODUCT HIGHLIGHTS

- | The motor's aluminum enclosure has high thermal conductivity which leads to good heat dissipation from the motor, low operating temperature, and long lifetime.
- | Water, moisture, and dust resistant design ensures usability even in harsh environment.
- | High precision processing guarantees the concentricity of the stator and rotor, uniform and consistent air gap, and stable operation. Simple yet good looking, practically designed for easy dismantling and reassembling.

- HIGH COOLING EFFICIENCY
- TRUE DIRECT DRIVE
- LOW ENERGY LOSS



- 1 Totally enclosed, silent, and anti-vibration design
- 2 Durable filtration components
- 3 Xinlei's self-developed motor

TECHNICAL SPECIFICATION

MODEL	POWER		PRESSURE	CAPACITY	DIMENSIONS	WEIGHT	OUTLET PIPE	NOISE LEVEL
	kW	HP						
XLAM7.5A	5.5	7.5	7	0.65	840X670X925	210	G3/4	65
			8	0.60				
			10	0.55				
XLAM10A	7.5	10	7	1.05	840X670X925	210	G3/4	65
			8	0.99				
			10	0.90				
XLAM15A	11	15	7	1.68	1000X820X1145	330	G3/4	65
			8	1.59				
			10	1.44				

MODEL	POWER kW HP		PRESSURE Bar	CAPACITY m³/min	DIMENSIONS (L×W×H)mm	WEIGHT Kg	OUTLET PIPE DIAMETER	NOISE LEVEL dB
XLAM20A	15	20	7	2.20	1000 X 820 X 1145	330	G3/4	65
			8	2.10				
			10	1.91				
XLAM25A	18.5	25	7	2.80	1100 X 880 X 1190	440	G1 1/4	75
			8	2.66				
			10	2.41				
XLAM30A	22	30	7	3.52	1100 X 880 X 1190	440	G1 1/4	75
			8	3.36				
			10	3.06				
XLAM40A	30	40	7	4.95	1200 X 950 X 1358	620	G1 1/4	75
			8	4.72				
			10	4.30				
XLAM50A	37	50	7	6.51	1300 X 1000 X 1366	650	G1 1/2	75
			8	6.19				
			10	5.62				
XLAM60A	45	60	7	7.71	1300 X 1000 X 1366	670	G1 1/2	80
			8	7.35				
			10	6.67				
XLAM75A	55	75	7	10.14	1600 X 1300 X 1600	1220	G2	80
			8	9.66				
			10	8.77				
XLAM100A	75	100	7	12.78	1600 X 1300 X 1600	1220	G2	80
			8	12.18				
			10	11.07				
XLAM150A	110	150	7	18.96	2090 X 1550 X 2000	2300	DN65	85
			8	18.06				
			10	16.42				
XLAM175A	132	175	7	23.37	2090 X 1550 X 2000	2300	DN65	85
			8	22.26				
			10	20.23				

•The exhaust volume is measured under the rated exhaust pressure, according to the national standard GB3853 test (equivalent to ISO1217 appendix C).

•Recommend frequency 30%-100%.

•The above data is based on the standard grid- 380V / 50HZ.

•Please make further inquiry for the non-standard specification type and machines which are used under high/low temperature,high humidity,dusty working environment.

ENVIRONMENTAL PROTECTION REFRIGERATED AIR DRYER

- ENERGY SAVING
- HIGH EFFICIENCY
- INTELLIGENT
- ENVIROMENTAL PROTECTION
- STABLE



Ambient temperature: 38°C, Max.42°C.
Intel temperature: 38°C, Max.65°C.
Working pressure: 0.7MPa,Max.1.6MPa
pressure dew point: 2°C~10°C(Air dew point:-23°C~17°C)
Installation environment: no sun,no rain,good ventilation,device level hard ground,no dust and fluff

Technical Specification

Xinlei refrigerated air dryer	Model	XLAD-7.5HP XLAD-10HP	XLAD-15HP XLAD-20HP	XLAD-25HP XLAD-30HP	XLAD-40HP XLAD-50HP	XLAD-60HP	XLAD-75HP	XLAD-100HP
Max. air volume	m³/min	1.2	2.4	3.6	6.5	8.5	10.5	13
Power supply		220V/50HZ for single phase						
Input power	kW	0.37	0.52	0.735	1.26	1.87	2.43	2.63
Air pipe connection		RC3/4"		RC1"	RC1-1/2"	RC2"		
Evaporator type		Aluminum alloy plate						
Cooling method		Air cooling, Fin-tube						
Refrigerant model		R134a		R410a				
Intelligent control and protection								
Display interface		LED dew point display, LED alarm code display, operation status indication						
Intelligent anti-freezing protection		Constant pressure expansion valve						
Temperature control		Automatic control of condensing temperature/dew point temperature						
High voltage protection		Temperature sensor		Temperature sensor&Inductive intelligent protection				
Low voltage protection		Temperature sensor&Inductive intelligent protection						
Entrance temperature		≤65℃						
Exit temperature		≈ Entrance temperature - 5~10℃						
Dew point temperature		2-10℃						
Weight	Kg	36	45	56	63	73	85	94
Dimension	L	480	520	640	700	770	770	800
	W	380	410	520	540	590	590	610
	H	665	725	850	950	990	990	1030

ENVIRONMENTAL PROTECTION REFRIGERATED AIR DRYER

- ENERGY SAVING
- HIGH EFFICIENCY
- INTELLIGENT
- ENVIROMENTAL PROTECTION
- STABLE



Ambient temperature: 38°C, Max.42°C.
Intel temperature: 38°C, Max.65°C.
Working pressure: 0.7MPa,Max.1.6MPa
pressure dew point: 2°C~10°C(Air dew point:-23°C~17°C)
Installation environment: no sun,no rain,good ventilation,device level hard ground,no dust and fluff

Technical Specification

Xinlei refrigerated air dryer	Model	XLAD-150HP	XLAD-175HP	XLAD-200HP	XLAD-250HP	XLAD-350HP	XLAD-420HP
	m ³ /min	17	23	27	33	42	55
Power supply		380V/50HZ for three phase					
Input power	kW	3.7	4.9	5.8	6.1	8	9.2
Air pipe connection		DN50	DN65	DN80			DN100
Evaporator type		Aluminum alloy plate					
Cooling method		Air cooling, Fin-tube					
Refrigerant model		R407C					
Intelligent control and protection							
Display interface		LED dew point display, LED alarm code display, LED compression current display, operation status indication					
Intelligent anti-freezing protection		Constant pressure expansion valve &compressor automatic start/stop					
Temperature control		Automatic control of condensing temperature/dew point temperature					
High voltage protection		Temperature sensor&Inductive intelligent protection					
Low voltage protection		Temperature sensor&Inductive intelligent protection					
Remote connection		Configure remote connection dry contact, RS485 expansion interface (Please let us know in advance if you need)					
Weight	Kg	180	210	350	420	550	680
Dimension	L	1100	1200	1200	1450	1450	1600
	W	850	900	950	1000	1100	1200
	H	1143	1203	1273	1523	1683	1700

AIR TANK

Technical Specification

Product name			Air tank size				Data			
Figure number	Specifications		Tank	Tank	barrel body	Weight	Inlet and outlet		Safety valve	Drain valve
	Volume / working pressure		internal diameter Ø (mm)	height (mm)	height (mm)	Kg	DN	RP	Interface	Interface
JAC-300(550)/0.8L-00	0.3	8	Φ550	1553	1050	82		RP1"	R1/2"	R1/2"
JBC-300(550)/1.0L-00	0.3	10	Φ550	1553	1050	90.7		RP1"	R1/2"	R1/2"
JAC-600(650)/0.8L-00	0.6	8	Φ650	2093	1500	144		RP1-1/2"	R3/4"	R1/2"
JBC-600(650)/1.0L-00	0.6	10	Φ650	2093	1500	149		RP1-1/2"	R3/4"	R1/2"
JAC-1000(800)/0.8L-00	1	8	Φ800	2180	1500	208		RP1-1/2"	R3/4"	R1/2"
JBC-1000(800)/1.0L-00	1	10	Φ800	2180	1500	246		RP1-1/2"	R3/4"	R1/2"
JYR2013-1.5/0.8-00	1.5	8	Φ1000	2310	1500	364		RP1-1/2"	Rp1"	R3/4"
JYR2013-1.5/1.0-00	1.5	10	Φ1000	2310	1500	477		RP1-1/2"	Rp1"	R3/4"
JYR2013-2.0/0.8-00A	2	8	Φ1000	2810	2000	432	80	Flange	R1"	R3/4"
JYR2013-2.0/1.0-00	2	10	Φ1000	2810	2000	577	125	Flange	R1"	R3/4"
JYR2013-3.0/0.8-00	3	8	Φ1200	2950	2000	649	80	Flange	R1-1/2"	R1"
JYR201*-3.0/1.0-00	3	10	Φ1200	2950	2000	786	80	Flange	R1-1/2"	R1"
JYR2013-4.0/0.8-00	4	8	Φ1400	3050	2000	994	125	Flange	R2-1/2"	R1"
JYR14-4.0/1.0-00	4	10	Φ1400	3050	2000	1173	100	Flange	R1-1/2"	R1"
JYR2013-5.0/0.8-00A	5	8	Φ1400	3810	2700	1116	150	Flange	R2-1/2"	R1"
JYR2014-5.0/1.0-00	5	10	Φ1400	3810	2700	1450	150	Flange	R2-1/2"	R1"



SOY PRECISION FILTER

Through interception, inertia, diffusion, gravity and other functions, the precision filter can remove water, dust, oil mist and other impurities contained in the compressed air effectively, so as to make the compressed air clean and dry and improve the quality of air.



C-Grade

Main pipeline filter, mostly used for air compressor, connecting after the rear cooler or before the refrigerated dryer, can filter a large number of liquid and solid particles over 3μm, reach the minimum residual oil content of only 5ppm.

T-Grade

It is mainly used for tools, machinery, motor, cylinder and other equipment, connecting before A-grade filter or after adsorption dryer, to filter liquid and solid particles as small as 1μm and reach the minimum residual oil content of 0.5 ppm.

A-Grade

Ultra-efficient dust removal filter, mostly used in the upstream of adsorption dryer or the downstream of refrigerated dryer, can filter out liquid and solid particles as small as 0.01μm, reach the lowest residual oil content of 0.01 PPM. Remember to install T grade air pipeline filter in the upstream to protect it.

H-Grade

Activated carbon oil mist filter, mostly used to purify food, drugs, breathing gas, can filter oil mist and hydrocarbons as small as 0.01μm, reach the lowest residual oil content of only 0.003 PPM. Remember to install A grade super-efficient oil removal filter in the upstream to protect it.

Technical Specification

MODEL	DISPLACEMENT (Nm ³ /min)	OUTLET DIAMETER	W	H
SOY-001	1.2	RC1"	105	285
SOY-002	2.4	RC1"	105	285
SOY-004	4.5	RC1-1/2"	125	350
SOY-007	8	RC1-1/2"	125	480
SOY-010	12	RC2"	140	610
SOY-015	17	RC2-1/2"	150	900
SOY-020	23	DN80	320	1060
SOY-025	27	DN80	320	1180
SOY-030	33	DN80	430	1150
SOY-040	45	DN80	430	1090

Max Working Pressure: ≤1.0MPa

Operating Fluid Temperature: C, T, A 66°C, H 50°C

Initial Pressure Drop: 0.01MPa

Max Permitted Pressure Drop: 0.07MPa

Service Life: C, T, A 8000h, H 1000h

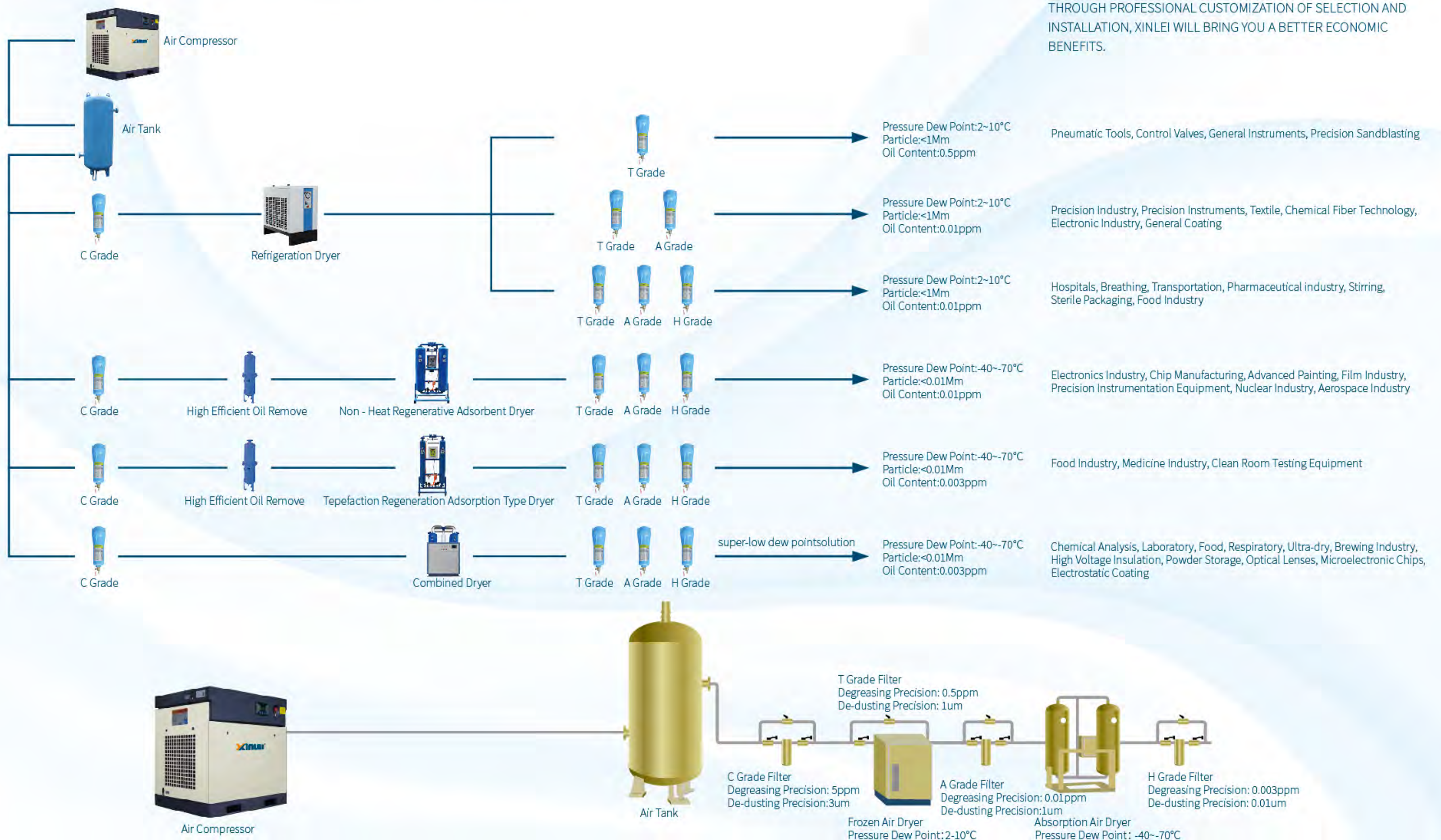
Connecting Methods: Taper pins with thread for 0.5~12 series. Flange for the series above 13.

FILTRATION ACCURACY LEVEL



GRADE	C	T	A	H
FUNCTION	PRE- FILTRATION	PRECISION FILTRATION	ULTRA PRECISION FILTRATION	ODOR REMOVAL ACTIVATED CARBON
PARTICLE DIAMETER	≤3μm	≤1μm	≤0.01μm	≤0.01μm
RESIDUAL OIL CONTENT	≤5ppm	≤0.5ppm	≤0.01ppm	≤0.003ppm

COMPRESSED AIR SYSTEM CONFIGURATION DIAGRAM



INTELLIGENT IOT MANAGEMENT PLATFORM

XINLEI IOT CLOUD PLATFORM SOLUTION (OPTIONAL)

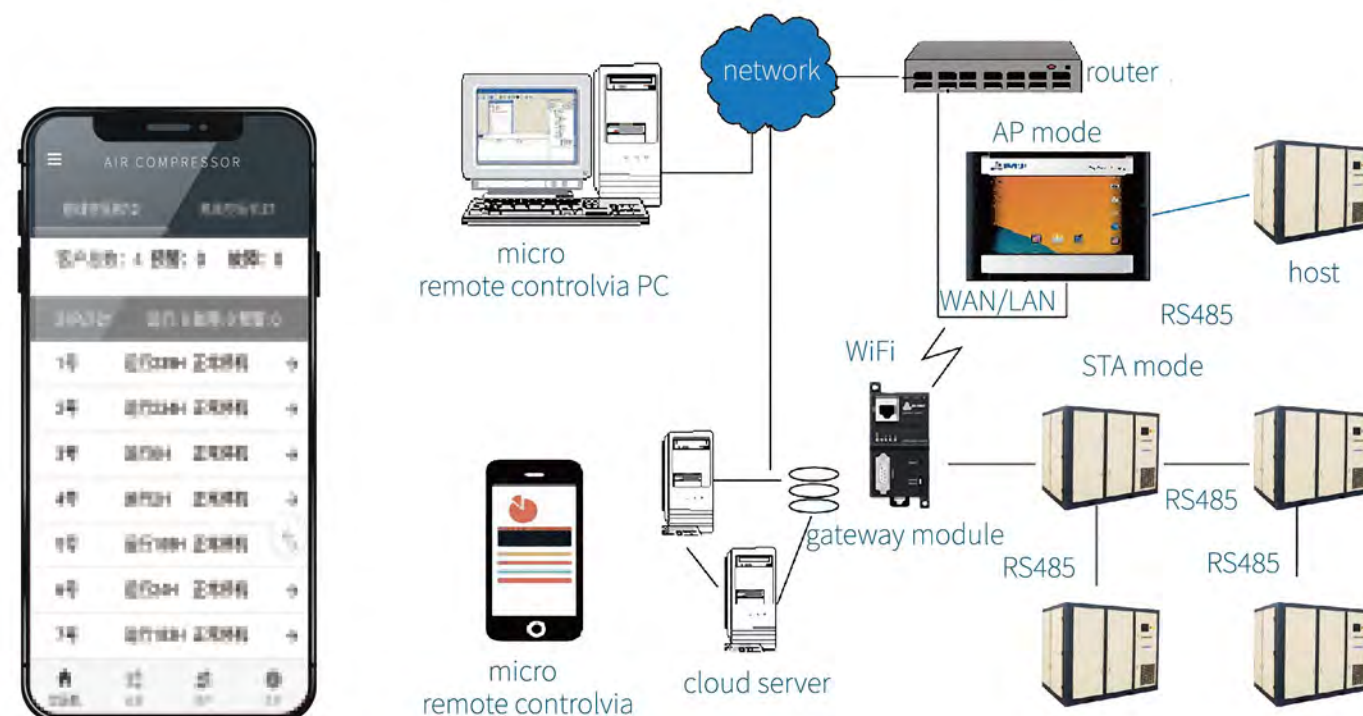
STABLE / SAFE / OPEN

Utilizing the 128-bit dynamic data encryption mode, the device is connected to the cloud platform via the gateway module and artificial intelligence interface. The gateway module provides PS485 or Ethernet interface and incorporates a variety of protocols, which is able to connect and monitor multiple devices remotely. The cloud platform is available for both android and IOS users. It is also an open source platform that allows connectivity with ERP or any other third party software.



MOBILE APP REAL TIME CONTROL

Xinlei has developed a real time control mobile app according to client's needs. The mobile app has successfully achieved the remote monitoring control, energy saving settings management, display of fault alarm, review of fault history, and cross-platform interconnection for the air compressor.



GLOBAL CUSTOMER SERVICE SYSTEM

WECHAT INTERACTIVE SERVICE PLATFORM

Xinlei has developed an interactive service platform via Wechat to enhance the interaction between Xinlei and clients worldwide. Customer service is available at our client's fingertips by a few touches on the mobile app.

CLOUD MONITORING SYSTEM

Xinlei establishes the cloud monitoring system, which can not only enable customers to achieve remote control of equipment, but also can monitor the machine to understand the performance and running dynamics of the machine well.

COMPETENT AFTER SALES SERVICE TEAM

Providing superior after sales service is the core value of Xinlei. Xinlei's experienced technical engineers will provide you with the quickest and most reliable service allowing you to have a peace of mind on the after sales service of Xinlei air compressors.

XINLEI OFFERS WARM RECEPTION TO FOREIGN CUSTOMERS FROM VARIOUS COUNTRIES



XINLEI CREATES INTERNATIONAL BRAND

EXPORTED TO MORE THAN 110 COUNTRIES AND REGIONS



Argentina	Brazil	Bahrain	Bangladesh	Canada	Ecuador
Egypt	France	Greece	Hungary	India	Indonesia
Iran	Italy	Korea	Malaysia	Mexico	Morocco
Myanmar	Netherlands	Nigeria	Pakistan	Palestine	Panama
Peru	Philippines	Poland	Russia	Singapore	Slovenia
South Africa	Spain	Thailand	Turkey	The UAE	U.K
Ukraine	U.S.A	Vietnam			

GLOBAL FOOTPRINT



XINLEI IN GERMANY



XINLEI IN ARGENTINA



XINLEI IN AUSTRALIA



XINLEI IN U.S.A

SATISFIED CUSTOMERS FROM ALL AROUND THE WORLD

MINING INDUSTRY



MANUFACTURING INDUSTRY



TEXTILE INDUSTRY



CONSTRUCTION INDUSTRY

